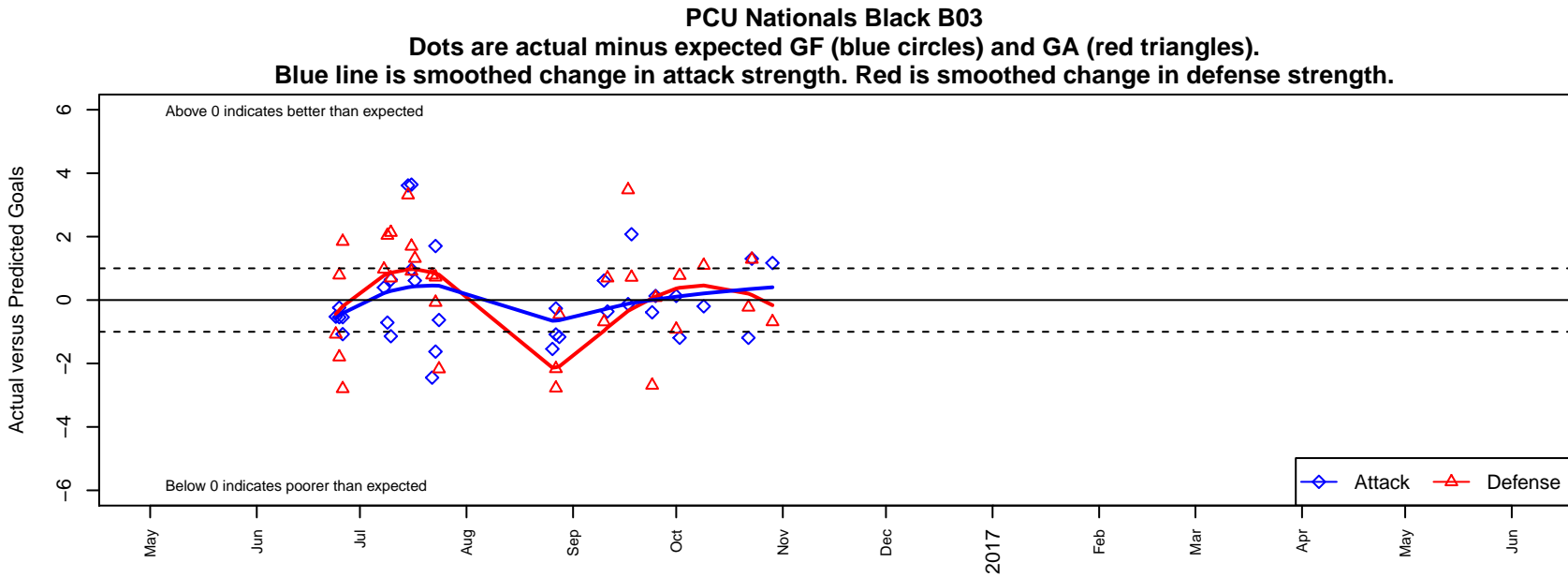


# PCU Nationals Black B03

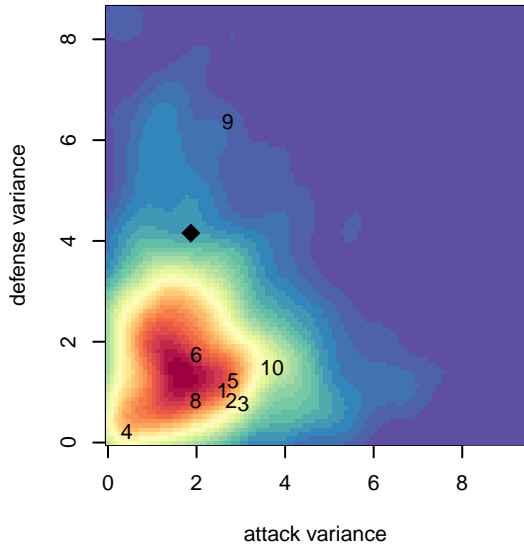
Portland City United SC  
 Portland, OR  
 B03 total strength=1049  
 attack=3.15 defense=1.78  
 fall league = PTT B03 Div 1 Green

alt names used:  
 PCU 03B Nationals  
 PCU 03B Nationals  
 PCU 03B Nationals  
 PCU 03B Nationals  
 PCU 03B NATIONALS  
 PCU 03B Black

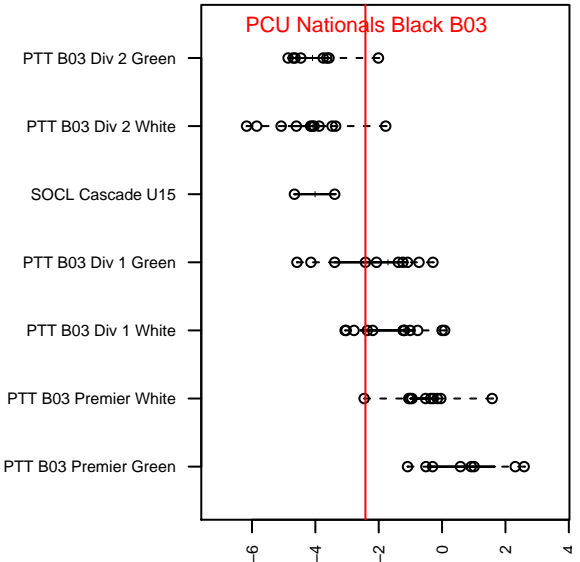
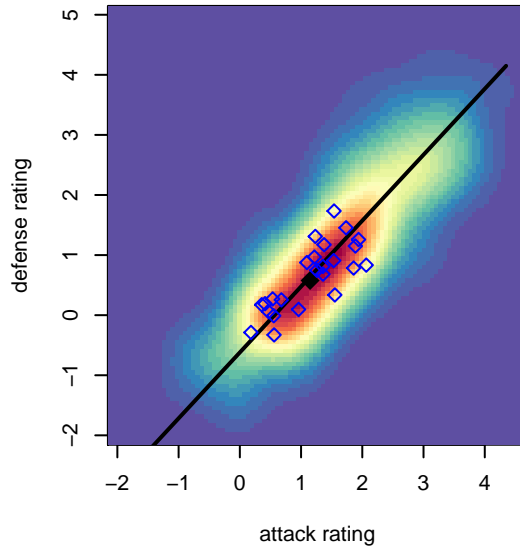
Venues played:  
 2016 Clash At the Border Div 2 Gold/Silver/Bro  
 2016 PCU Summer Classic U14 Silver  
 2016 Beaverton Cup BU14 Silver  
 2016 Crossfire Select U14 Bronze  
 2016 Chinook Cup Silver U14  
 2016 PTT B03 Division 1 Green



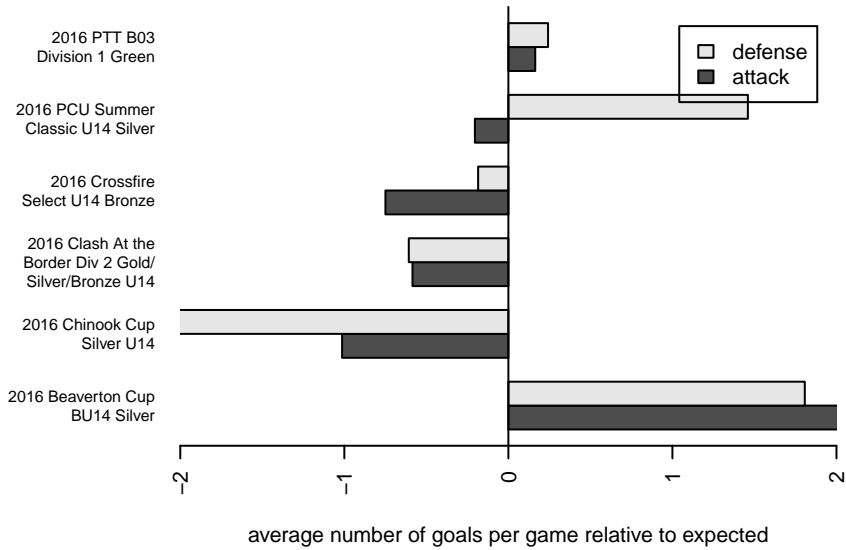
**attack and defense variance (black dot)  
relative to other teams  
and top 10 in region**



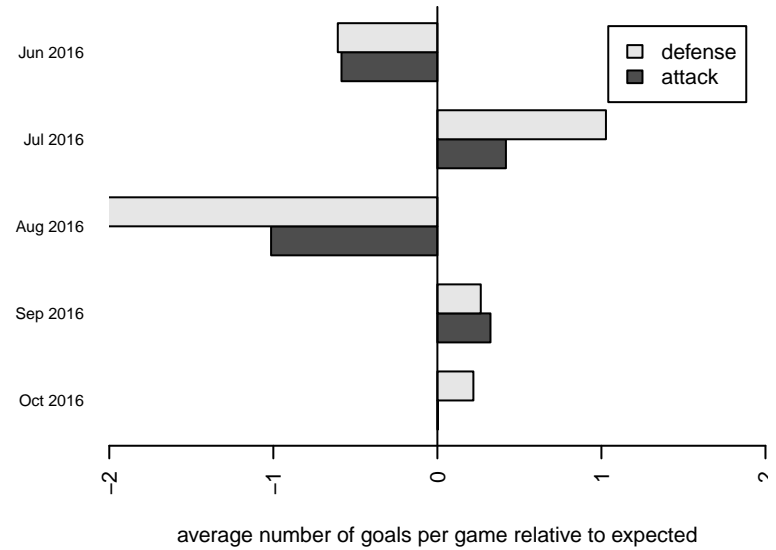
**attack and defense rating  
relative to others at age  
and all opponents in last 13 months**



**Performance relative to 13 month average**



**Performance relative to 13 month average**



<b>date</b>	<b>home</b>		<b>away</b>		<b>venue</b>	<b>pred.home</b>	<b>pred.away</b>
2016-10-29	PCU Nationals Black B03	4	Aloha United Atletico Black B03	2	2016 PTT B03 Division 1 Green	2.83	1.31
2016-10-23	PCU Nationals Black B03	4	CSC Storm Navy B03	0	2016 PTT B03 Division 1 Green	2.70	1.28
2016-10-22	Crossfire Oregon Green II B03	2	PCU Nationals Black B03	0	2016 PTT B03 Division 1 Green	1.77	1.19
2016-10-09	Bend FC Timbers White B03	0	PCU Nationals Black B03	4	2016 PTT B03 Division 1 Green	1.09	4.20
2016-10-02	PCU Nationals Black B03	0	Crossfire Oregon Green II B03	1	2016 PTT B03 Division 1 Green	1.19	1.77
2016-10-01	THUSC Beryllium Black B03	4	PCU Nationals Black B03	2	2016 PTT B03 Division 1 Green	3.08	1.87
2016-09-25	PCU Nationals Black B03	2	THUSC Beryllium Black B03	3	2016 PTT B03 Division 1 Green	1.87	3.08
2016-09-24	LASC IFC Champions FC B03	7	PCU Nationals Black B03	1	2016 PTT B03 Division 1 Green	4.31	1.39
2016-09-18	PCU Nationals Black B03	3	HSC Velez B03	1	2016 PTT B03 Division 1 Green	0.93	1.72
2016-09-17	4-H Atletico B03	0	PCU Nationals Black B03	1	2016 PTT B03 Division 1 Green	3.47	1.13
2016-09-11	Westside Timbers Samba B03	2	PCU Nationals Black B03	1	2016 PTT B03 Division 1 Green	2.70	1.36
2016-09-10	PCU Nationals Black B03	2	LASC IFC Champions FC B03	5	2016 PTT B03 Division 1 Green	1.39	4.31
2016-08-28	Foothills SC Celtic Green B03	3	PCU Nationals Black B03	1	2016 Chinook Cup Silver U14	2.54	2.16
2016-08-27	PCU Nationals Black B03	0	Capital FC Timbers Black B03	5	2016 Chinook Cup Silver U14	1.08	2.22
2016-08-27	Eastside Timbers White B03	4	PCU Nationals Black B03	1	2016 Chinook Cup Silver U14	1.84	1.27
2016-08-26	PCU Nationals Black B03	1	Westside Timbers Mundial B03	8	2016 Chinook Cup Silver U14	2.54	1.20
2016-07-24	PCU Nationals Black B03	2	Mukilteo Rush B03	3	2016 Crossfire Select U14 Bronze	2.63	0.83
2016-07-23	PCU Nationals Black B03	1	Seattle United W White B03	1	2016 Crossfire Select U14 Bronze	2.63	0.93
2016-07-23	PCU Nationals Black B03	5	Seattle United Shoreline White B03	0	2016 Crossfire Select U14 Bronze	3.30	0.72
2016-07-22	ISC Gunners Select B03	0	PCU Nationals Black B03	1	2016 Crossfire Select U14 Bronze	0.79	3.45
2016-07-17	PCU Nationals Black B03	2	LASC IFC Champions FC B03	3	2016 Beaverton Cup BU14 Silver	1.39	4.31
2016-07-16	Westside Timbers Samba B03	1	PCU Nationals Black B03	5	2016 Beaverton Cup BU14 Silver	2.70	1.36
2016-07-16	PCU Nationals Black B03	2	Eastside Timbers Black B03	3	2016 Beaverton Cup BU14 Silver	1.04	3.91
2016-07-15	LASC IFC Champions FC B03	1	PCU Nationals Black B03	5	2016 Beaverton Cup BU14 Silver	4.31	1.39
2016-07-10	Washington Timbers White 1 B03	0	PCU Nationals Black B03	0	2016 PCU Summer Classic U14 Silver	2.13	1.14
2016-07-10	Westside Timbers Samba B03	2	PCU Nationals Black B03	2	2016 PCU Summer Classic U14 Silver	2.70	1.36
2016-07-09	PCU Sting Red B03	1	PCU Nationals Black B03	0	2016 PCU Summer Classic U14 Silver	3.04	0.71
2016-07-08	HSC Bayern B03	1	PCU Nationals Black B03	2	2016 PCU Summer Classic U14 Silver	1.97	1.61

<b>date</b>	<b>home</b>		<b>away</b>		<b>venue</b>	<b>pred.home</b>	<b>pred.away</b>
2016-06-26	PCU Nationals Black B03	0	Washington Timbers White 2 B03	0	2016 Clash At the Border Div 2 Gold/Silv	1.08	1.85
2016-06-26	Westside Timbers Mundial B03	4	PCU Nationals Black B03	2	2016 Clash At the Border Div 2 Gold/Silv	1.20	2.54
2016-06-25	Westside Timbers Mundial B03	3	PCU Nationals Black B03	2	2016 Clash At the Border Div 2 Gold/Silv	1.20	2.54
2016-06-25	CUSC Red B03	0	PCU Nationals Black B03	2	2016 Clash At the Border Div 2 Gold/Silv	0.79	2.24
2016-06-24	PCU Nationals Black B03	0	NSC Montana Purple B03	4	2016 Clash At the Border Div 2 Gold/Silv	0.53	2.92